

Brand: Hurricane*
Engine: Nissan VQ35DE
Part Type: Connecting Rods
Center to Center Length: 144.2mm/5.677"
Big End Bore Diameter: 55.00mm/2.165"
Big End Width: 20.80mm/0.819"
Small End Bore Diameter: 22.00mm /0.866"
Small End Width: 21.80mm/0.858"
Beam Style: H-beam
Connecting Rod Bolt Diameter: 3/8"
Approximate Connecting Rod Weight: 640g/piece
Advertised Horsepower Rating: 900hp
Quantity: Sold as 6 pieces /set
Material: Forged 4340 steel
Connecting Rod Finish: Shot-peened, Polished
Pin: Bronze wrist pin bushings
Wrist Pin Style: Floating
Cap Retention Style: Cap screw
Weight Matched Set: Yes ,Balanced +/- 1g
Magnafluxed: Yes
Private Label: Yes ,available
Custom design: Yes, accept

H-Beam Rods For NISSAN INFINITE VQ35

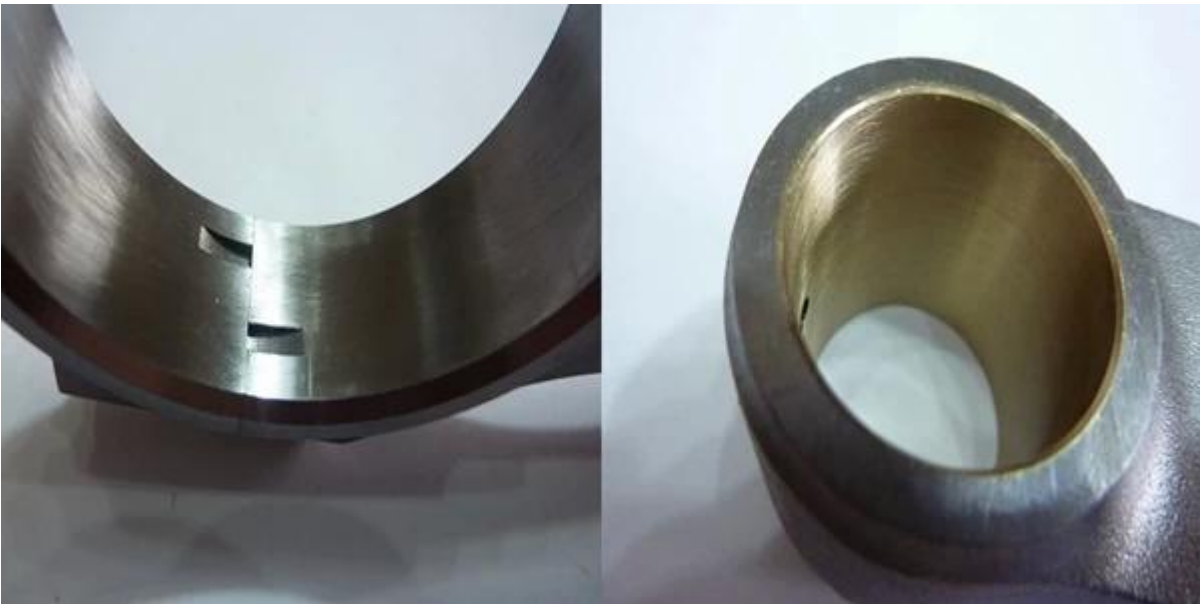
Nissan VQ35DE connecting rods engineered from high tensile [forged 4340 steel](#), heat treated with 34-38HRC to provide improved strength, shot peened to increases fatigue life, all these connecting rods are bronzed bushings for floating piston wrist pins. And they fit for street, high performance and racing Nissan VQ35DE engines, support up to 900 HP.

H-beam Nissan VQ35 RODS design features:

1. Forged 4340 steel(40CrNiMoA)



2. Honed bid end bore and small end bore with bushing



3. H-beam



If you are interested more features, please kindly explore: [NEWS](#)